

Beaufort County Hurricane Evacuation

The Lowcountry Regional Transportation Authority (LRTA) operating as Palmetto Breeze Transit is the designated public transportation provider for hurricane and other emergency evacuations. The following provides information regarding transportation throughout Beaufort County during an emergency evacuation. Look for the Staging Area closest to your home. If you are not sure which is closest or need to be picked up closer to your residence, call Palmetto Breeze at 843-757-5782.

Beaufort County encourages area residents to have plans in place to stay outside the hurricane zone during a tropical storm or hurricane. Arrangements should be made in advance of the hurricane season (which begins June 1 each year).

For those unable to make such arrangements, the American Red Cross opens Hurricane Evacuation Centers as shelters of last resort. Individuals who are unable to provide their own transportation to a Hurricane Evacuation shelter are encouraged to use public evacuation transportation.

Palmetto Breeze will activate Emergency Evacuation shuttles as directed by the Beaufort County Emergency Management Division. The Emergency Evacuation Staging Areas are available at www.bcgov.net or by contacting Palmetto Breeze. Buses will only travel between Emergency Evacuation Bus Staging Areas and designated shelters.

Buses will operate during a voluntary evacuation only as requested by Beaufort County Emergency Management officials. If activated during a voluntary evacuation, only select areas will be evacuated and will be determined on a case-by-case basis for each storm.

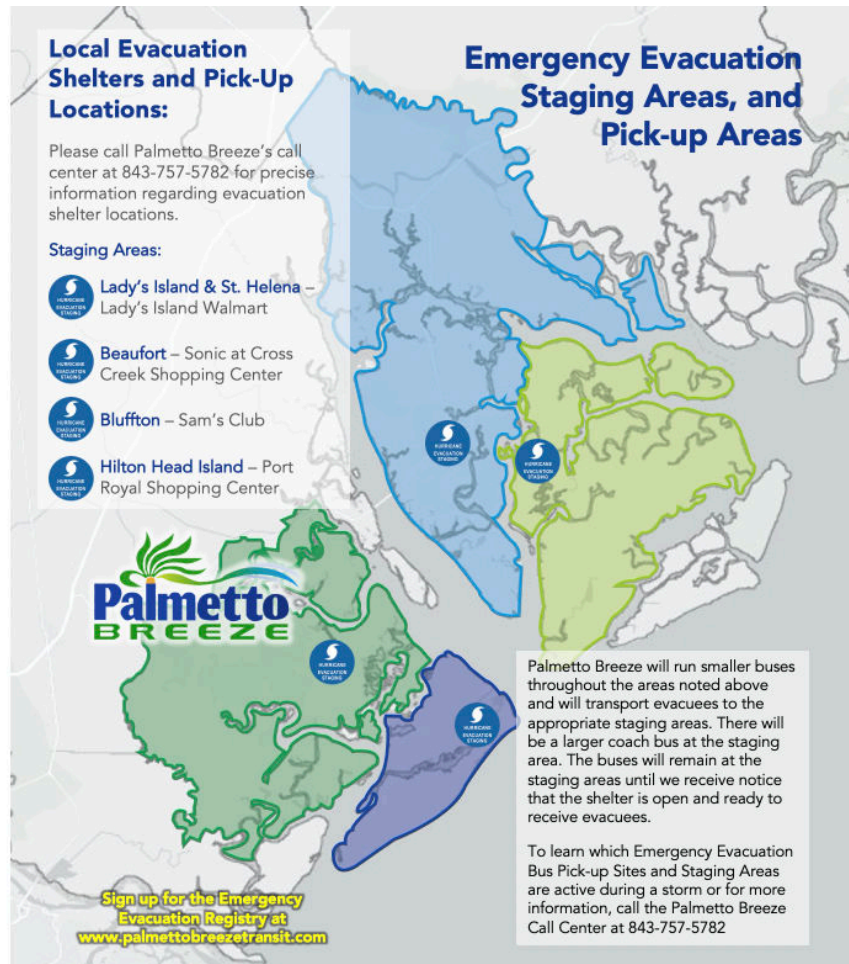
Local Evacuation Shelters and Pick-Up Locations:

Please call Palmetto Breeze's call center at 843-757-5782 for precise information regarding evacuation shelter locations.

Staging Areas:

-  Lady's Island & St. Helena – Lady's Island Walmart
-  Beaufort – Sonic at Cross Creek Shopping Center
-  Bluffton – Sam's Club
-  Hilton Head Island – Port Royal Shopping Center

Emergency Evacuation Staging Areas, and Pick-up Areas



Out of-County Evacuations

For out-of-County evacuations of Beaufort County residents, the pick-up points will remain the same. Various out-of-County shelters will be used during an out-of-County evacuation.

Suggested Items to Take with You to the Shelter:

- One suitcase per person with one change of clothing
- One blanket or sleeping bag per person.
- A first-aid kit that includes your family's prescription medications.
- Emergency tools including a battery-powered radio, flashlight, and batteries.
- Mobile phones and charging devices.
- An extra set of car keys, credit card, and cash.
- Personal hygiene supplies.
- Special items for infant, elderly, or disabled family members.
- An extra pair of prescription glasses or contact lenses.
- Meals will be provided by the Red Cross at the shelter; however you should bring any special dietary requirements and a limited amount of snacks for your family.
- Keep important family documents in a waterproof container.

If you have any pre-emergency questions regarding evacuation transportation, please contact the Palmetto Breeze Call Center at 843-757-5782. During a mandatory evacuation, we can be reached at the call center and after hours at the Beaufort County Emergency Operation Center at 843-255-4064.

Palmetto Breeze Transit is Owned and Operated by the Lowcountry Regional Transportation Authority.

Contact Us at 843-757-5782

www.PalmettoBreezeTransit.com

@PalmettoBreezeTransit
Copyright © 2020 LRTA



Palmetto Breeze Transit is made possible through support from the Federal Transit Administration.

Evacuation Tips:

1. Register for transportation services in advance at www.PalmettoBreezeTransit.com and follow the link at the top of the page to our emergency evacuation registry.
2. All vehicles are wheelchair accessible. If you have special needs, call in advance to ensure we can accommodate your request.
3. Once onboard, find a seat quickly. Leave the front seats vacant for elderly and disabled passengers who may board after you.
4. Take as few personal items as possible. There is limited space on the bus and in the shelters. No household furnishings, weapons, illegal drugs, or alcohol will be allowed on the vehicles.
5. Pets are not allowed on the bus or in the main general population shelters. For more pet information, please contact the Beaufort County Animal Shelter and Control at 843-255-5010. Service animals are allowable. Passengers may have to show valid photo identification or other identifying information to return to their home area.
6. Plan Ahead!

Palmetto Breeze discontinues service when sustained winds reach 35 miles per hour.

TITLE VI Compliance: The Lowcountry Regional Transportation Authority ensures that no person on the basis of race, color, or national origin will be subjected to discrimination in the level and quality of transportation services and transit-related benefits. For more information visit www.palmetto breezetransit.com.